

IN HOUSE HMIS ANALYSIS
FOR THE YEAR 2005-06, 2006-07, 2007-08, 2008-09 & 2009-10
BONGAIGAON DISTRICT

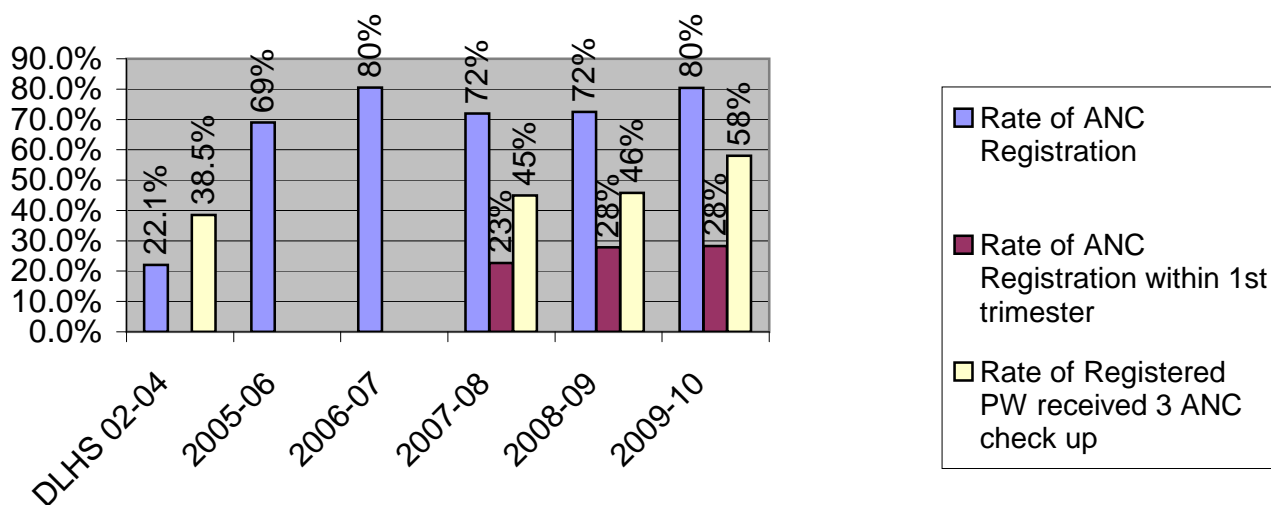
Indicator	DLHS 02-04	2005-06	2006-07	2007-08	2008-09	2009-10	Remarks
Rate of ANC Registration	22.1%	69%	80%	72%	72%	80%	Total ANC registration / Total PW estimated
Rate of ANC Registration within 1st trimester				23%	28%	28%	Total ANC in 1 trimester / Total ANC registration
Rate of Registered PW received 3 ANC check up	38.5%			45%	46%	58%	Total PW received 3 ANC checkup/ Total ANC registration
Rate of PW received TT1 dose	4.2%	63%	78%	78%	70%	70%	Total PW given TT1 / Total PW estimated
Rate of PW received TT2/ Booster dose	58.6%	61%	73%	70%	63%	70%	Total PW given TT2 or Booster / Total PW estimated
Rate of PW received 100 IFA tab.	8.9%			11%	63%	72%	Total PW received 100 IFA tab / Total PW estimated
Rate of home delivery attended by Doctor/Nurse/TBA		10.23%	11.22%	13.66%	11%	4%	Home delivery attendant by Doctor/Nurse/TBA) / Total home delivery estimated
Rate of Govt. Institutional delivery	15%	7%	13%	30%	32%	40%	Total Govt. Institutional delivery / Total live birth estimated
Rate of CS deliveries in Govt. Institution				5.02%	19%	18%	Total CS cases in Govt Institution / Total complicated live birth estimated (15%)
Rate of still birth	9%	1.3%	1.4%	2.60%	2.80%	2.89%	Total still birth reported / Total delivery reported
Rate new born weighed				40%	61%	80%	Total new born weighed / Total live birth reported
Rate of new born weighed less than 2.5 kg				28%	15%	13%	Total new born weighed<2.5kg / Total new born weighed
Rate of PW with obstetric complication attended Govt Institution				2.67%	22%	23%	Total PW with obstetric complication attended Govt Institution / Total PW with obstetric complication estimated (15%)
Maternal Mortality Ratio	490		73	97	108	121	Maternal death reported / Total live birth estimated
Rate of Post Partum Care (within 48 hours of delivery)	2.2%			19%	31%	41%	Total mother received Post partum care (within 48 hours of delivery) / Total delivery reported
Rate of Post Partum Care (within 2-14 days of delivery)				14%	23%	35%	Total mother received Post partum care (within 2-14 days of delivery) / Total delivery reported
Rate of MTP in Govt Institution				7%	10%	10%	Total MTP in Govt Institution / Total PW estimated
Rate of RTI/ STI cases treated				0%	1%	0.47%	Total RTI/ STI cases treated / Total eligible couple estimated (15-45 yrs)
Rate of male sterilization				0%	0%	2%	Total no. of male sterilization / Total eligible couple for sterilization estimated
Rate of female sterilization				0.4%	4.9%	5.4%	Total no. of female sterilization / Total eligible couple for sterilization estimated
Rate of IUD user				0.886%	0.420%	0.293%	Total no. of IUD user / Total eligible couple estimated
Rate of JSY beneficiaries facilitated by ASHA				67%	85%	87%	Total JSY beneficiary facilitated by ASHA / Total JSY beneficiary
Rate of mother received JSY money				35%	31%	40%	Total mother received JSY money / Total live birth estimated
Rate of infant received BCG	59.1%	105%	96%	99%	84%	91%	Total infant received BCG / Total Infant estimated
Rate of infant received DPT1		103%	97%	97%	90%	89%	Total infant received DPT1 / Total Infant estimated
Rate of infant received DPT2		84%	91%	93%	83%	87%	Total infant received DPT2 / Total Infant estimated

IN HOUSE HMIS ANALYSIS
FOR THE YEAR 2005-06, 2006-07, 2007-08, 2008-09 & 2009-10
BONGAIGAON DISTRICT

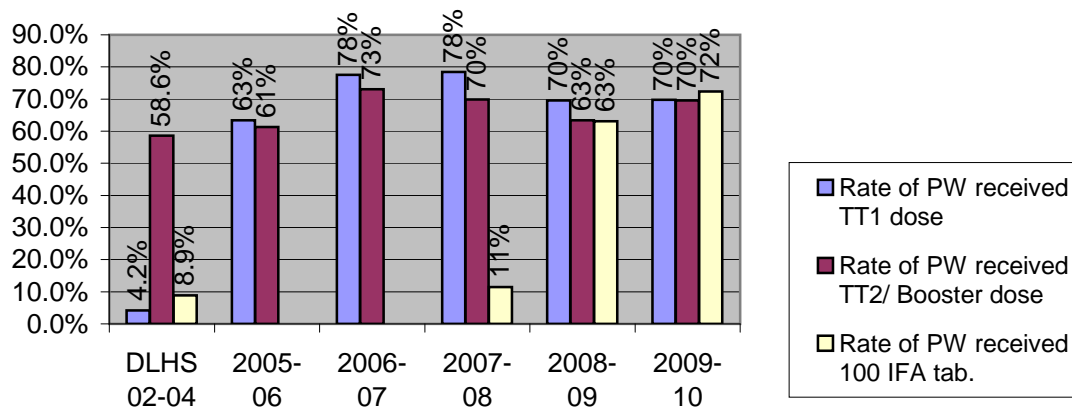
Rate of infant received DPT3	39.4%	73%	82%	85%	80%	86%	Total infant received DPT3 / Total Infant estimated
Rate of infant received OPV1		103%	97%	85%	90%	89%	Total infant received OPV1 / Total Infant estimated
Rate of infant received OPV2		84%	91%	81%	83%	87%	Total infant received OPV2 / Total Infant estimated
Rate of infant received OPV3	21.0%	73%	82%	74%	80%	85%	Total infant received OPV3 / Total Infant estimated
Rate of infant received Measle vaccine	40.0%	70%	70%	79%	72%	82%	Total infant received Measle vaccine / Total Infant estimated
Rate of fully immunized infant	9.3%	70%	70%	75%	63%	78%	Total Fully immunized infant / Total Infant estimated
Rate of children received DPT booster		45%	50%	57%	50%	52%	Total DPT booster / Total 1 yr old children estimated
Rate of children received OPV booster		45%	50%	50%	50%	51%	Total OPV booster / Total 1 yr old children estimated
Rate of children more than 5 years old received DT5				49%	23%	46%	Total Children received DT5 / Total 5 year old children estimated
Rate of children more than 10 years old received TT10				47%	28%	23%	Total Children received TT10 / Total 10 year old children estimated
Rate of children more than 16 years old received TT16				34%	21%	16%	Total Children received TT16 / Total 16 year old children estimated
Rate infant received Vit-A dose-1		70%	41%	28%	64%	79%	Total infant received Vit-1 / Total Infant estimated
Rate children received Vit-A dose-5		7%	1%	1%	5%	50%	Total child received Vit-A dose-5 / Total 3 year old children estimated
Rate of diptheria case				0.00%	0%	0%	Total diptheria case/ Total below 5 year children estimated
Rate of Pertusis case				0.00%	0%	0%	Total Pertusis case/ Total below 5 year children estimated
Rate of Tetanus neonatorum case				0.00%	0%	0%	Total Tetanus neonatorum case/ Total below 5 year children estimated
Rate of Tetanus other case				0.00%	0%	0%	Total Tetanus other case/ Total below 5 year children estimated
Rate of AFP case				0.00%	0%	0%	Total AFP cases/ Total below 5 year children estimated
Rate of Measle case		0.00%	0.01%	0.46%	0.45%	0.16%	Total Measles cases/ Total below 5 year children estimated
Rate of diarrhoea case		4.41%	3.40%	3.29%	4.61%	2.63%	Total Diarrhoea / Total below 5 year children estimated
Rate of ARI case	4.6%	5.57%	2.21%	2.60%	5.52%	1.53%	Total ARI/ Total below 5 year children estimated
Rate of malaria case				1.27%	0.51%	0.06%	Total Malaria/ Total below 5 year children estimated
Rate of Tuberculosis case				0.14%	0.01%	0.00%	Total Tuberculosis / Total below 5 year children estimated
Early Neonatal Mortality Rate	27			4.97	5.18	2.98	No of Early neonatal (within 1 week) death / Total live birth estimated
Neonatal Mortality Rate	40			6.37	6.54	4.30	No. of Neonatal (within 1 month) death / Total live birth estimated
Infant Mortality Rate	66			10.02	11.38	8.17	No. of infant (within 1 year) death / Total live birth estimated
Under 5 Mortality Rate	93			2.24	3.18	2.05	No. of Under 5 year death / Total Under 5 yr children estimated

IN HOUSE HMIS ANALYSIS
FOR THE YEAR 2005-06, 2006-07, 2007-08, 2008-09 & 2009-10
BONGAIGAON DISTRICT

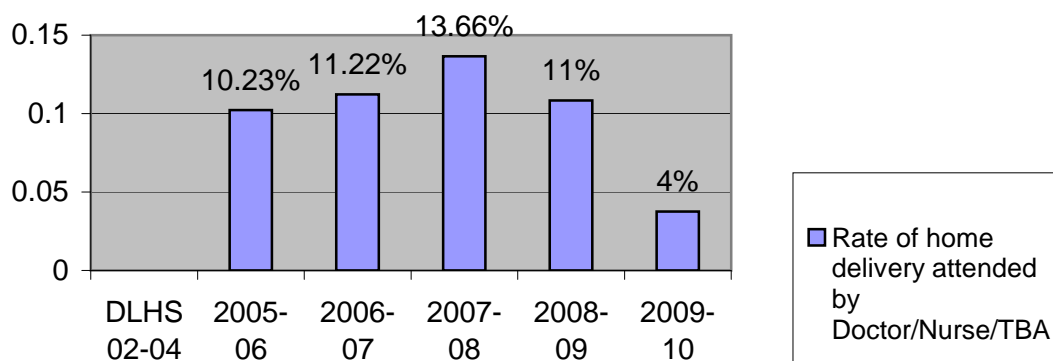
STATUS OF ANTENATAL CARE SERVICES



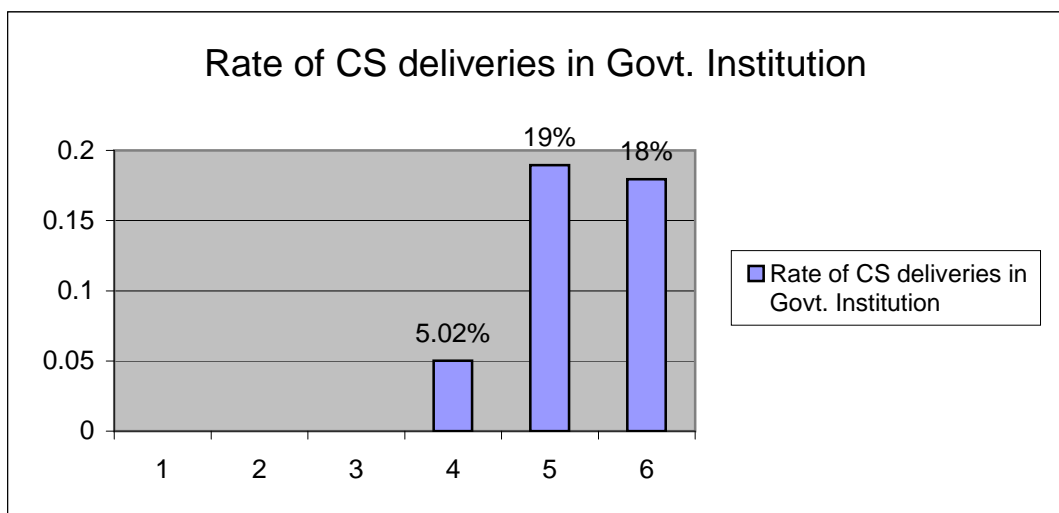
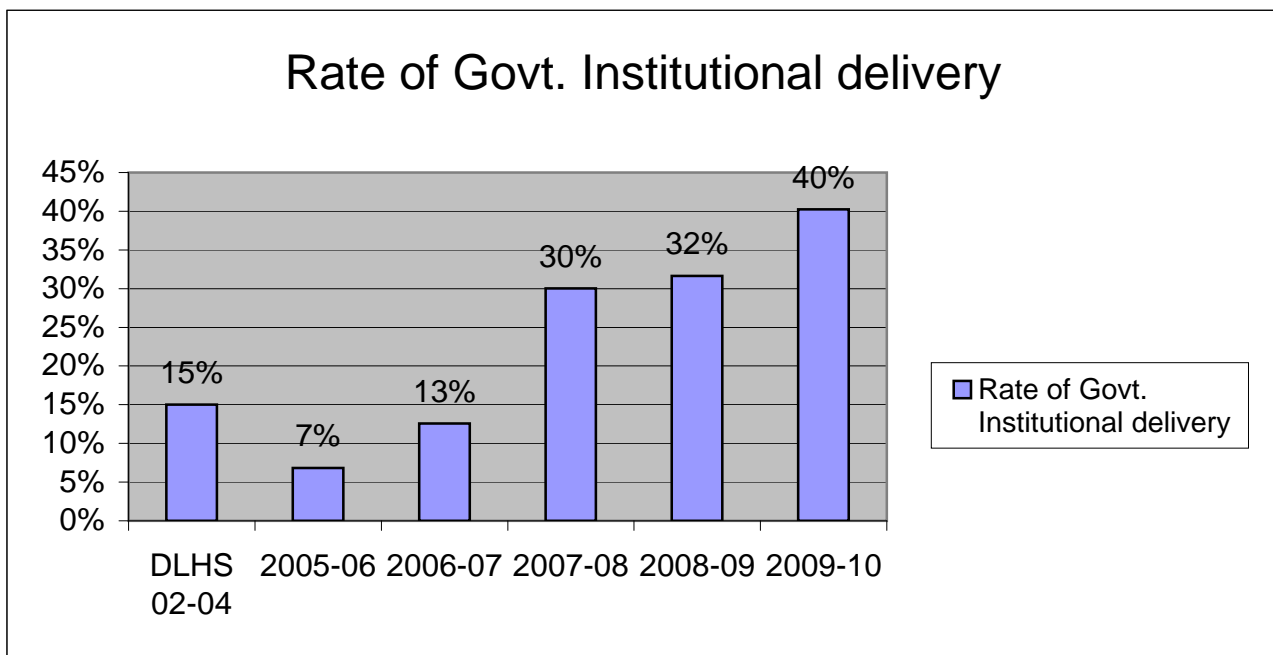
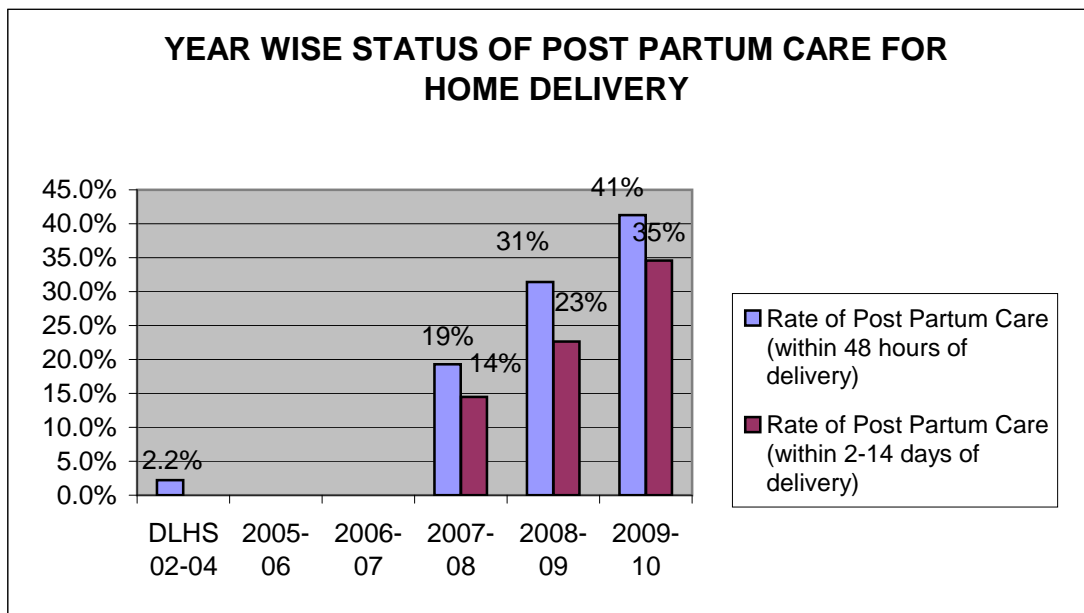
RATE OF PREGNANT WOMEN RECEIVED TT1, TT2/TT(B) & IFA TAB



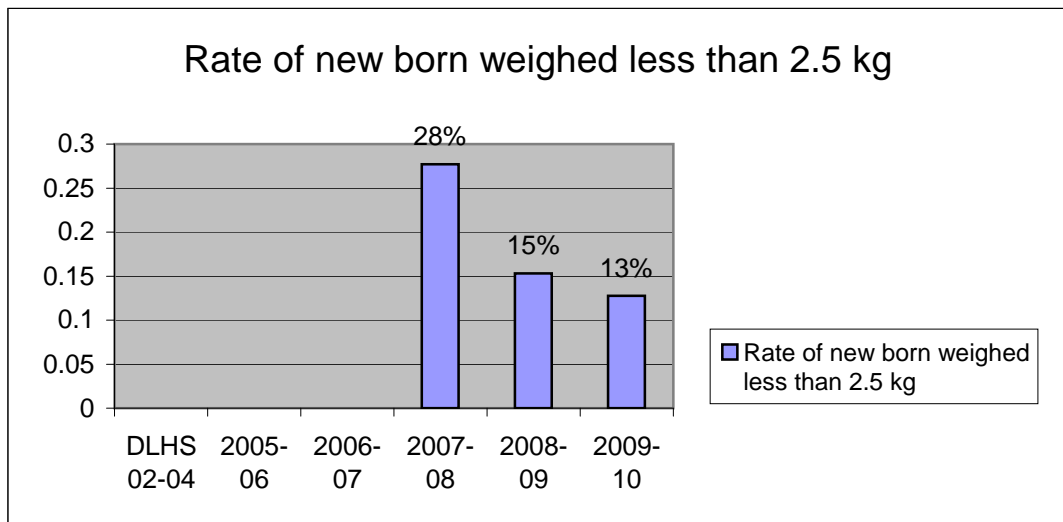
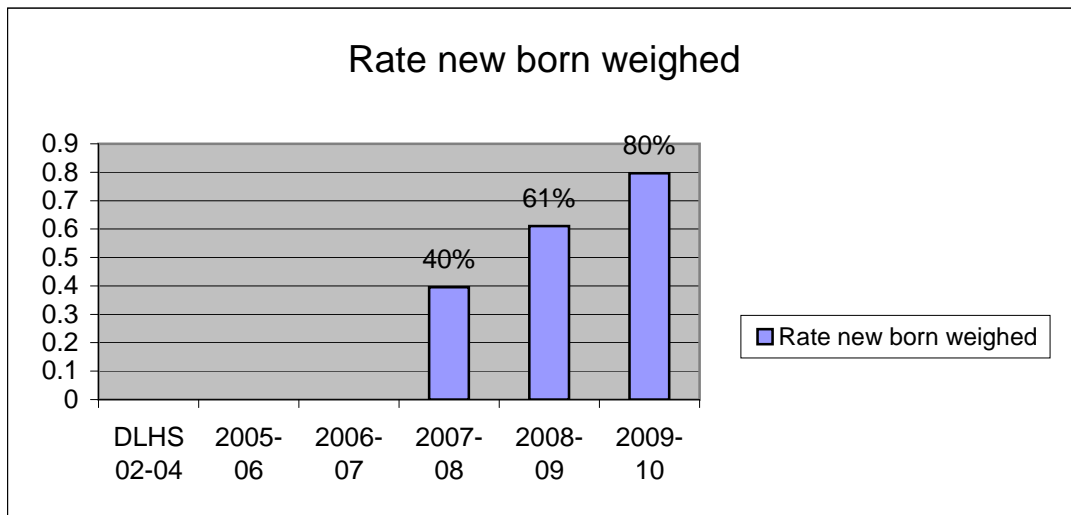
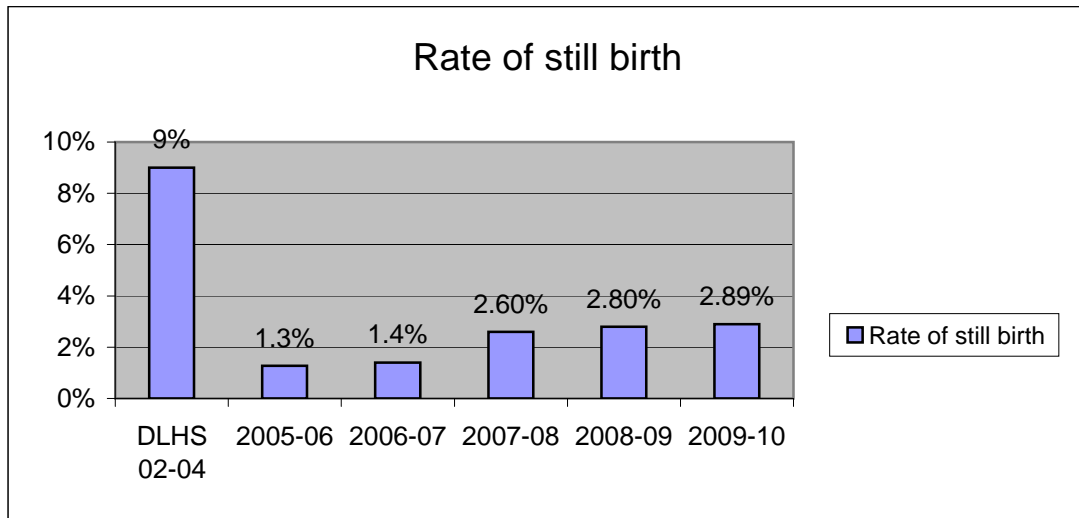
Rate of home delivery attended by Doctor/Nurse/TBA



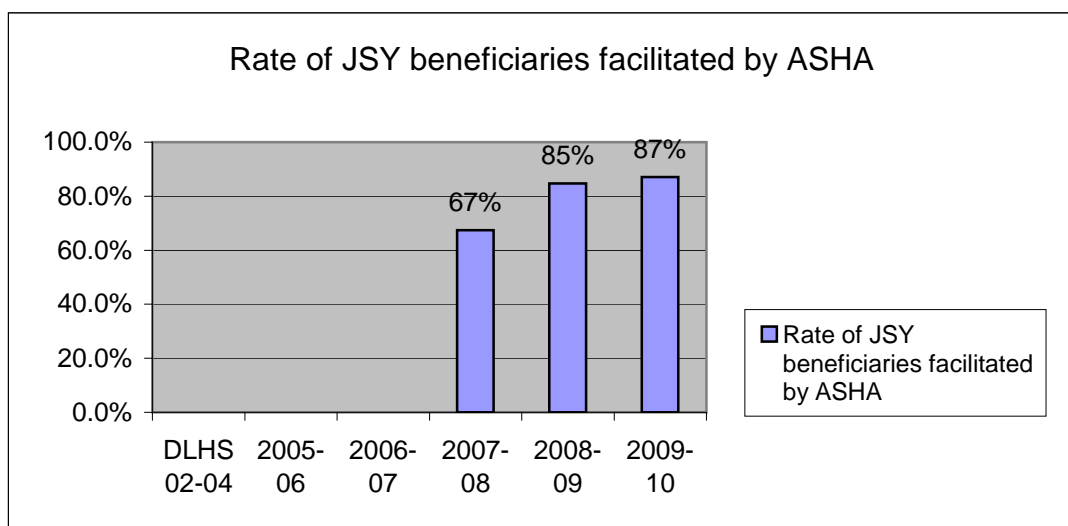
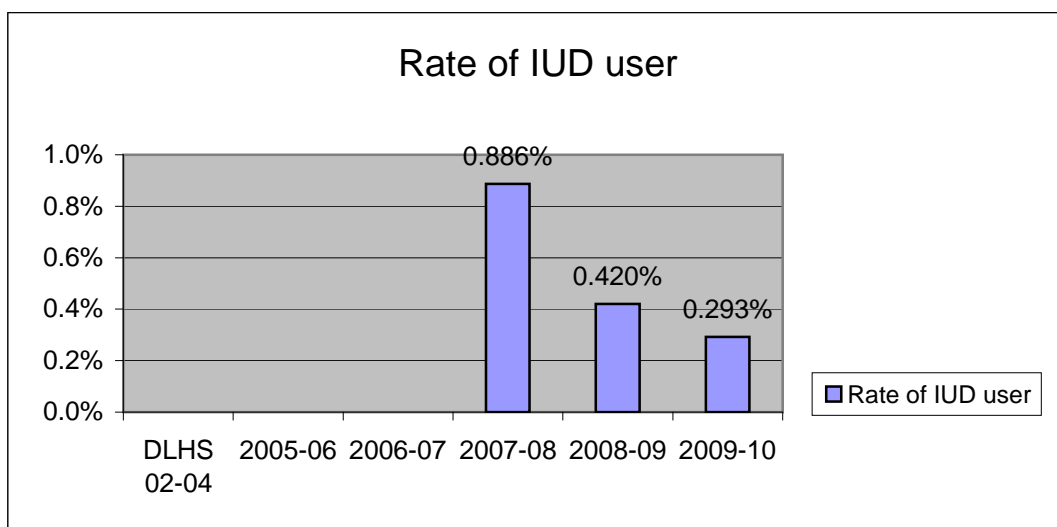
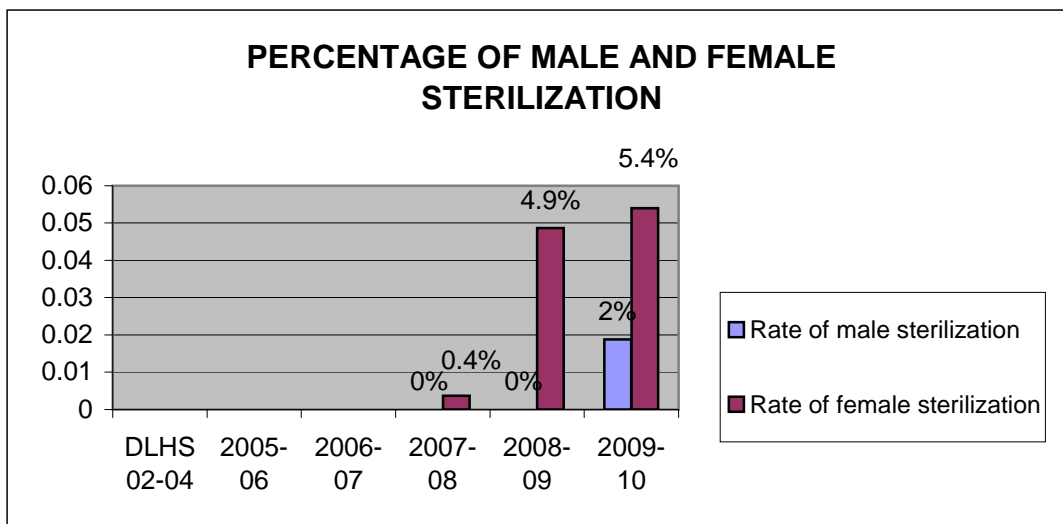
IN HOUSE HMIS ANALYSIS
FOR THE YEAR 2005-06, 2006-07, 2007-08, 2008-09 & 2009-10
BONGAIGAON DISTRICT



IN HOUSE HMIS ANALYSIS
FOR THE YEAR 2005-06, 2006-07, 2007-08, 2008-09 & 2009-10
BONGAIGAON DISTRICT

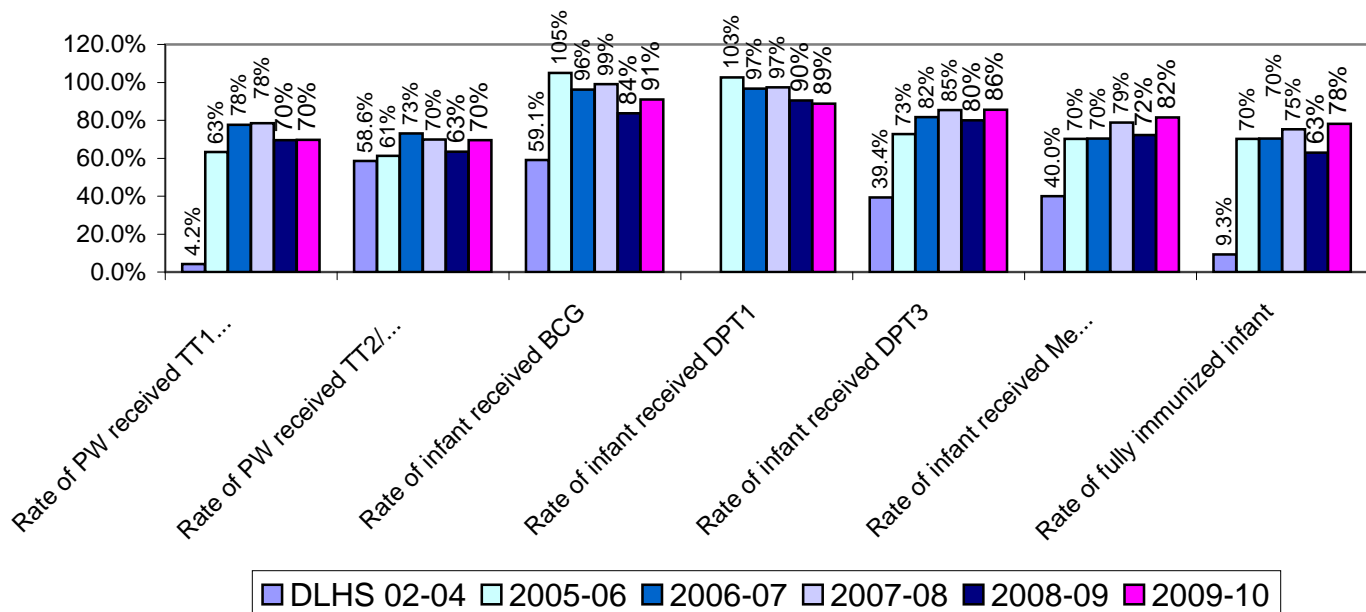


IN HOUSE HMIS ANALYSIS
FOR THE YEAR 2005-06, 2006-07, 2007-08, 2008-09 & 2009-10
BONGAIGAON DISTRICT

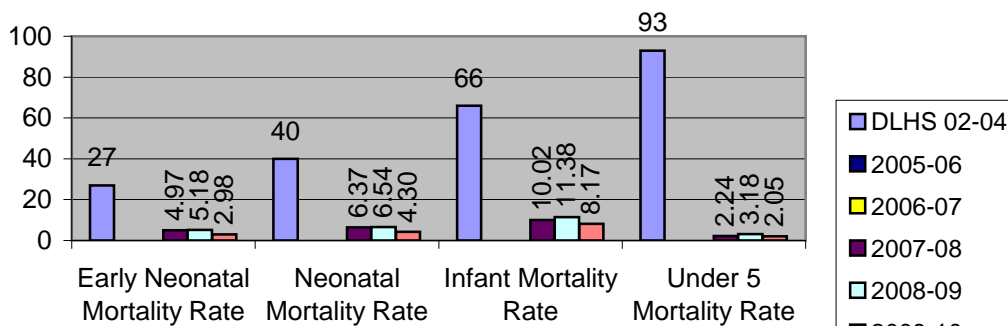


IN HOUSE HMIS ANALYSIS
FOR THE YEAR 2005-06, 2006-07, 2007-08, 2008-09 & 2009-10
BONGAIGAON DISTRICT

IMMUNIZATION STATUS OF 2005-06 to 2009-10



INFANT MORTALITY AS PER HMIS REPORT



Maternal Mortality Ratio

